

# Beyond the series... An advanced look at 8, 9 & 10

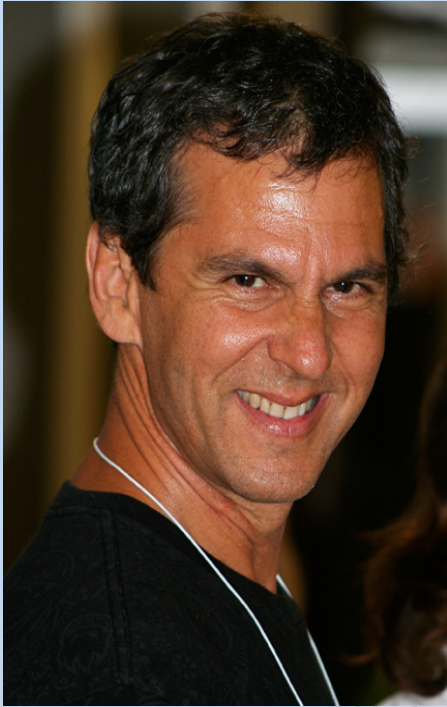


Photo credit: Denis Berger

**Northwest Hellerwork** invites you to attend a special workshop and unique opportunity to work with **Dan Bienenfeld**, Hellerwork SI trainer and 30-year veteran of Structural Integration.

Come to this 4-day workshop to explore the integrative sessions, 8, 9 and 10, which are the basis for all advanced work.

Using advanced seeing skills and anatomical logic, gain a deeper knowledge of Hellerwork SI. Learn to take your clients way beyond the series. See a demonstrated 3-series and give and receive a 3-series.

Learn useful, powerful tools to transform your understanding and take yourself to the next level of your work!

## You will receive:

- \*advanced tissue skills
- \*'beyond your eyes' seeing skills
- \*movement facilitation
- \*emotional facilitation techniques
- \*self care tools
- \*powerful breakthroughs in your work
- \*fun and growth
- \*certificate of completion
- \*this course will provide 32 CE credits

## When:

July 16-19 2010  
each day will begin at 9am  
break for lunch 1pm-2:30pm  
(you are responsible for your own lunch)  
bodywork 2:30-6:30pm  
(or the trainers' discretion)

## Where:

Pacific Rim College  
229-560 Johnson Street (Market Square)  
Victoria, BC. Canada, v8w 3c6  
Tel: 250.483.2119 Fax: 250.984.0901  
Toll Free: 1.866.890.6082  
www.pacificrimcollege.ca  
\*inquire for a list of possible accommodations  
within walking distance

*"Continuous work on advanced bodies (individuals who have gone through the ten session series) may sometimes make them grow shorter and certainly does little good unless the practitioner (1) manages to reach a deeper level than in previous sessions or (2) works at a higher level of integration than before or (3) finds a place he has never tried to clean-up before."*

Dr. Ida P. Rolf

## Tuition:

\$525.00 CND.  
\$200 registration /deposit due by May 1, 2010  
(non refundable after July 1st)  
\* \$50 administration fee for any cancellations  
\* completion of payment due by July 1st  
\* if event is canceled, deposits will be refunded  
Tea, water, and snacks provided

Cheque or money order payable to:

**Northwest Hellerwork**

40-1120 Summit Ave., Victoria, B.C. v8t 2p7

To register please send contact information  
and any questions to Misty Buckham at:

**hwsiwrkshop@live.com**

**We look forward to seeing you there!!!**